

## Product Datasheet

### Sodium/hydrogen exchanger 1 antibody (orb109383)

**Description** Rabbit polyclonal to Sodium/hydrogen exchanger 1

**Species/Host** Rabbit

**Reactivity** Human

**Conjugation** Unconjugated

**Tested Applications** WB

**Immunogen** Synthetic peptide derived from the human NHE-1 protein

**Preservatives** Provided as solution in TRIS buffered saline with 0.08% sodium azide

**Form/Appearance** Provided as solution in TRIS buffered saline with 0.08% sodium azide

**Concentration** Lot specific, see vial

**Storage** Product should be stored at -20°C. Aliquot to avoid freeze/thaw cycles

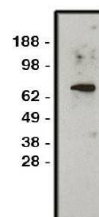
**Note** For research use only

**Application notes** Antibody can be used for Western blotting (1:400 starting dilution). Optimal concentration should be evaluated by serial dilutions.

**Uniprot ID** **P19634**

**Hazard Information** This product is intended FOR RESEARCH USE ONLY, and FOR TESTS IN VITRO, not for use in diagnostic or therapeutic procedures involving humans or animals.

**Expiration Date** 12 months from date of receipt.



Western blot analysis of HT-29 cell lysa...