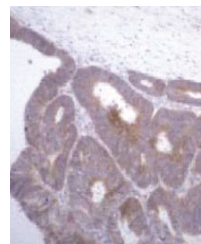


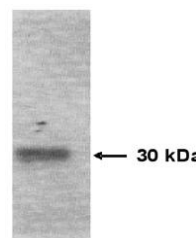
Product Datasheet

TIMP1 antibody (orb109161)

Description	Mouse monoclonal antibody to TIMP1
Species/Host	Mouse
Reactivity	Human
Conjugation	Unconjugated
Tested Applications	ELISA, IHC, WB
Immunogen	Hybridoma produced by the fusion of splenocytes from BALB/c mice immunized with a synthetic peptide derived from the human TIMP-1 protein and mouse myeloma Ag8563 cells. Sequence common in monkey
Preservatives	Provided as solution in phosphate buffered saline with 0.08% sodium azide
Form/Appearance	Provided as solution in phosphate buffered saline with 0.08% sodium azide
Concentration	See vial for concentration
Storage	Product should be stored at -20°C. Aliquot to avoid freeze/thaw cycles
Note	For research use only
Application notes	Antibody can be used for Western blotting (1-2 µg/ml) and immunohistochemistry on formalin-fixed, paraffin-embedded tissues (1-5 µg/ml). Optimal concentration should be evaluated by serial dilutions.
Isotype	IgG1
Clonality	Monoclonal
Uniprot ID	P01033, Q95KL9
Hazard Information	This product is intended FOR RESEARCH USE ONLY, and FOR TESTS IN VITRO, not for use in diagnostic or therapeutic procedures involving humans or animals.
Expiration Date	12 months from date of receipt.



Immunohistochemical staining of human CO...



Western blot analysis of recombinant hum...