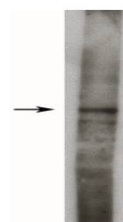


Product Datasheet

Sphingosine Kinase 1 antibody (orb109149)

Description	Rabbit polyclonal to Sphingosine Kinase 1
Species/Host	Rabbit
Reactivity	Rat
Conjugation	Unconjugated
Tested Applications	WB
Immunogen	Synthetic peptide derived from the rat sphingosine kinase 1, long form, protein.
Preservatives	Provided as solution in phosphate buffered saline with 0.08% sodium azide
Form/Appearance	Provided as solution in phosphate buffered saline with 0.08% sodium azide
Concentration	See vial for concentration
Storage	Product should be stored at -20°C. Aliquot to avoid freeze/thaw cycles
Note	For research use only
Application notes	Antibody suitable for Western blots (1-5 µg/ml). Optimal concentration should be evaluated by serial dilutions.
Isotype	IgG
Uniprot ID	Q9NYA1, Q1HGK5
Hazard Information	This product is intended FOR RESEARCH USE ONLY, and FOR TESTS IN VITRO, not for use in diagnostic or therapeutic procedures involving humans or animals.
Expiration Date	12 months from date of receipt.



Western blot analysis of rat kidney lysa...