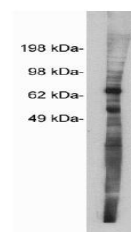


Product Datasheet

Netrin 1 antibody (orb109028)

Description	Rabbit polyclonal to Netrin 1
Species/Host	Rabbit
Reactivity	Bovine, Feline, Human, Mouse, Rat
Conjugation	Unconjugated
Tested Applications	WB
Immunogen	Synthetic peptide derived from the human Netrin 1 protein
Preservatives	Provided as solution in phosphate buffered saline with 0.08% sodium azide
Form/Appearance	Provided as solution in phosphate buffered saline with 0.08% sodium azide
Concentration	See vial for concentration
Storage	Product should be stored at -20°C. Aliquot to avoid freeze/thaw cycles
Note	For research use only
Application notes	Antibody can be used for Western blotting (0.5-2 µg/ml). Optimal concentration should be evaluated by serial dilutions.
Isotype	IgG
Uniprot ID	NP_004813
Hazard Information	This product is intended FOR RESEARCH USE ONLY, and FOR TESTS IN VITRO, not for use in diagnostic or therapeutic procedures involving humans or animals.
Expiration Date	12 months from date of receipt.



Western blot analysis of MDCKII cell lysate using Netrin 1 antibody.