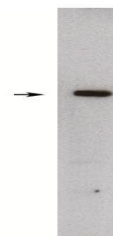


Product Datasheet

Sphingosine Kinase 1 antibody (orb109016)

| | |
|----------------------------|--|
| Description | Rabbit polyclonal to Sphingosine Kinase 1 |
| Species/Host | Rabbit |
| Reactivity | Rat |
| Conjugation | Unconjugated |
| Tested Applications | WB |
| Immunogen | Synthetic peptide derived from the rat sphingosine kinase 1, long form, protein. |
| Preservatives | Provided as ligand affinity purified antibody in phosphate buffered saline with 0.08% sodium azide |
| Form/Appearance | Provided as ligand affinity purified antibody in phosphate buffered saline with 0.08% sodium azide |
| Concentration | Lot specific, see vial |
| Storage | Product should be stored at -70°C. Aliquot to avoid freeze/thaw cycles |
| Note | For research use only |
| Application notes | Antibody can be used for Western blotting (1-5 µg/ml). Optimal concentration should be evaluated by serial dilutions. |
| Uniprot ID | Q9NYA1, Q1HGK5 |
| Hazard Information | This product is intended FOR RESEARCH USE ONLY, and FOR TESTS IN VITRO, not for use in diagnostic or therapeutic procedures involving humans or animals. |
| Expiration Date | 12 months from date of receipt. |



Western blot analysis of rat kidney lysa...