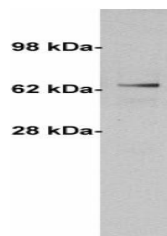


Product Datasheet

Alpha 1 Fetoprotein antibody (orb109011)

Description	Mouse monoclonal antibody to Alpha 1 Fetoprotein
Species/Host	Mouse
Reactivity	Canine, Human, Porcine
Conjugation	Unconjugated
Tested Applications	IHC
Immunogen	Hybridoma produced by the fusion of splenocytes from BALB/c mice immunized with purified human alpha-fetoprotein and mouse myeloma cells.
Preservatives	Provided as solution in phosphate buffered saline with 0.08% sodium azide
Form/Appearance	Provided as solution in phosphate buffered saline with 0.08% sodium azide
Concentration	See vial for concentration
Storage	Product should be stored at -20°C. Aliquot to avoid freeze/thaw cycles
Note	For research use only
Application notes	Antibody can be used for immunohistochemistry on formalin-fixed, paraffin embedded tissues (1-5 µg/ml). Optimal concentration should be evaluated by serial dilutions.
Isotype	IgG2a
Clonality	Monoclonal
Hazard Information	This product is intended FOR RESEARCH USE ONLY, and FOR TESTS IN VITRO, not for use in diagnostic or therapeutic procedures involving humans or animals.
Expiration Date	12 months from date of receipt.



Immunohistochemical staining of HepG2 cells