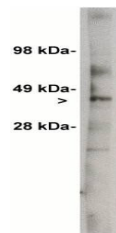


## Product Datasheet

# Ceramide Glycosyltransferase antibody (orb108926)

<b>Description</b>	Provided as solution in phosphate buffered saline with 0.08% sodium azide
<b>Species/Host</b>	Rabbit
<b>Reactivity</b>	Human
<b>Conjugation</b>	Unconjugated
<b>Tested Applications</b>	ELISA, WB
<b>Concentration</b>	See vial for concentration
<b>Storage</b>	Product should be stored at -20°C. Aliquot to avoid freeze/thaw cycles
<b>Note</b>	For research use only
<b>Application notes</b>	Antibody can be used for Western blotting (5-10µg/ml) and ELISA. Other applications not yet tested. Optimal concentration should be evaluated by serial dilutions.
<b>Source</b>	Rabbits were immunized with a synthetic peptide derived from human ceramide glycosyltransferase protein.
<b>Uniprot ID</b>	<a href="#">Q16739</a>
<b>Hazard Information</b>	This product is intended FOR RESEARCH USE ONLY, and FOR TESTS IN VITRO, not for use in diagnostic or therapeutic procedures involving humans or animals.
<b>Expiration Date</b>	12 months from date of receipt.



Western blot analysis of rat kidney lysa...