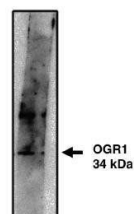


Product Datasheet

OGR1/GPR68 antibody (orb108899)

Description	Rabbit polyclonal to OGR1/GPR68
Species/Host	Rabbit
Reactivity	Human
Conjugation	Unconjugated
Tested Applications	FA, IHC, WB
Preservatives	Provided as solution in phosphate buffered saline with 0.08% sodium azide
Form/Appearance	Provided as solution in phosphate buffered saline with 0.08% sodium azide
Concentration	See vial for concentration
Storage	Product should be stored at -20°C. Aliquot to avoid freeze/thaw cycles
Note	For research use only
Application notes	Antibody can be used for Western blotting (5-10 µg/ml). Western blot should be visualized using a high sensitivity secondary/substrate system (i.e. Pierce's SuperSignal West Femto Maximum Sensitivity Substrate). Optimal concentration should be evaluated by serial dilutions.
Isotype	IgG
Source	Rabbits were immunized with recombinant protein derived from human OGR1 (GPR68).
Uniprot ID	Q15743
Hazard Information	This product is intended FOR RESEARCH USE ONLY, and FOR TESTS IN VITRO, not for use in diagnostic or therapeutic procedures involving humans or animals.
Expiration Date	12 months from date of receipt.



Western blot analysis of OGR1 transfecte...