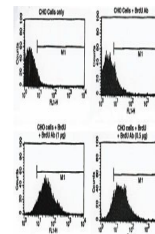


## Product Datasheet

### BrdU antibody (orb108872)

<b>Description</b>	Provided as solution in phosphate buffered saline with 0.08% sodium azide
<b>Species/Host</b>	Mouse
<b>Conjugation</b>	FITC
<b>Tested Applications</b>	FACS, IHC-P
<b>Concentration</b>	See vial for concentration
<b>Storage</b>	Product should be stored at -20°C. Aliquot to avoid freeze/thaw cycles
<b>Note</b>	For research use only
<b>Application notes</b>	Reacts with cells containing incorporated BrdU, showing a clear, nucleus confined, speckled pattern. Use at 1-5 µg/10 <sup>6</sup> cells for flow cytometry. Optimal concentration should be evaluated by serial dilutions.
<b>Isotype</b>	IgG1
<b>Clonality</b>	Monoclonal
<b>Source</b>	Bromodeoxyuridine conjugated to Helix Pomatia Haemocyanin was used to immunize BALB/c mice
<b>Hazard Information</b>	This product is intended FOR RESEARCH USE ONLY, and FOR TESTS IN VITRO, not for use in diagnostic or therapeutic procedures involving humans or animals.
<b>Expiration Date</b>	12 months from date of receipt.



Flow  
cytometric  
analysis of  
CHO cells  
us...