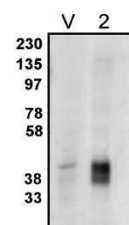


Product Datasheet

LPP2 antibody (orb108865)

Description	Provided as solution in phosphate buffered saline with 0.08% sodium azide
Species/Host	Rabbit
Reactivity	Human
Conjugation	Unconjugated
Tested Applications	WB
Concentration	See vial for concentration
Storage	Product should be stored at -20°C. Aliquot to avoid freeze/thaw cycles
Note	For research use only
Application notes	This antibody can be used for Western blotting (10-15 µg/ml). Optimal concentration should be evaluated by serial dilutions. NOTE: Boiling LPP2 with sample buffer will aggregate the protein. Lysates should be prepared by mixing cells with lysis buffer (possibly with extra detergent) to solubilize the protein before adding sample buffer and lysate SHOULD NOT be boiled/heated.
Isotype	IgG
Source	Rabbits were immunized with a unique peptide derived from the human lysophospholipid phosphatase 2 protein.
Uniprot ID	O43688
Hazard Information	This product is intended FOR RESEARCH USE ONLY, and FOR TESTS IN VITRO, not for use in diagnostic or therapeutic procedures involving humans or animals.
Expiration Date	12 months from date of receipt.



Western blot analysis of HEK-293 cells u...