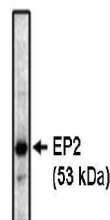


## Product Datasheet

### Prostaglandin-E2 receptor EP2 antibody (orb108836)

<b>Description</b>	Provided as solution in phosphate buffered saline with 0.08% sodium azide
<b>Species/Host</b>	Mouse
<b>Reactivity</b>	Bovine, Human, Rat
<b>Conjugation</b>	Unconjugated
<b>Tested Applications</b>	WB
<b>Concentration</b>	See vial for concentration
<b>Storage</b>	Product should be stored at -20°C. Aliquot to avoid freeze/thaw cycles
<b>Note</b>	For research use only
<b>Application notes</b>	This antibody can be used for Western blot analysis (1-5 µg/ml). Optimal concentration should be evaluated by serial dilutions.
<b>Isotype</b>	IgG1
<b>Clonality</b>	Monoclonal
<b>Source</b>	Hybridoma produced by the fusion of splenocytes from mice immunized with recombinant human EP2 receptor protein and mouse myeloma cells.
<b>Uniprot ID</b>	<b>Q62928</b>
<b>Hazard Information</b>	This product is intended FOR RESEARCH USE ONLY, and FOR TESTS IN VITRO, not for use in diagnostic or therapeutic procedures involving humans or animals.
<b>Expiration Date</b>	12 months from date of receipt.



Western blot analysis of bovine brain ly...