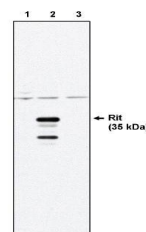


Product Datasheet

Rit antibody (orb108776)

Description	Provided as sterile filtered solution containing 20 mM sodium phosphate, 150 mM sodium chloride, 50%...
Species/Host	Mouse
Reactivity	Human
Conjugation	Unconjugated
Tested Applications	WB
Concentration	See vial for concentration
Storage	Product should be stored at -20°C. Aliquot to avoid freeze/thaw cycles
Note	For research use only
Application notes	Antibody detects recombinant Rit protein expressed in 293 cells by Western blot analysis at a concentration of 0.5 to 1 µg/ml. Does not cross-react with Rin protein. Optimal concentration should be evaluated by serial dilutions.
Isotype	IgG1
Clonality	Monoclonal
Source	Hybridoma produced by the fusion of splenocytes from mice immunized with recombinant full-length human Rit protein and mouse myeloma cells.
Uniprot ID	Q92963
Hazard Information	This product is intended FOR RESEARCH USE ONLY, and FOR TESTS IN VITRO, not for use in diagnostic or therapeutic procedures involving humans or animals.
Expiration Date	12 months from date of receipt.



Western blot analysis of control 293 cel...