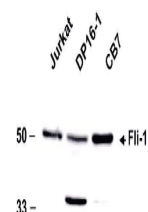


## Product Datasheet

### fli-1 antibody (orb108654)

<b>Description</b>	Sheep polyclonal to fli-1
<b>Species/Host</b>	Sheep
<b>Reactivity</b>	Human, Mouse
<b>Conjugation</b>	Unconjugated
<b>Tested Applications</b>	WB
<b>Immunogen</b>	Protein corresponding to amino acid sequence 1-239 of the N terminus and having a molecular weight of 52 kDa
<b>Preservatives</b>	Provided as solution in phosphate buffered saline with 0.08% sodium azide
<b>Form/Appearance</b>	Provided as solution in phosphate buffered saline with 0.08% sodium azide
<b>Concentration</b>	See vial for concentration
<b>Storage</b>	Product should be stored at -20°C. Aliquot to avoid freeze/thaw cycles
<b>Note</b>	For research use only
<b>Application notes</b>	Applications: Western Blot at 1:500
<b>Isotype</b>	IgG
<b>Uniprot ID</b>	<b>Q01543</b>
<b>Hazard Information</b>	This product is intended FOR RESEARCH USE ONLY, and FOR TESTS IN VITRO, not for use in diagnostic or therapeutic procedures involving humans or animals.
<b>Expiration Date</b>	12 months from date of receipt.



Western blot analysis of cell lines usin...