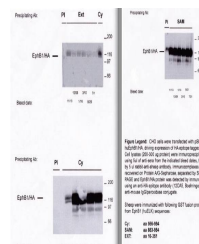


Product Datasheet

ELK rec tyr Kinase antibody (orb108645)

Description	Sheep polyclonal to ELK rec tyr Kinase
Species/Host	Sheep
Reactivity	Human
Conjugation	Unconjugated
Tested Applications	IP
Immunogen	A GST fusion protein ephB1 (Elk receptor) -SAM corresponding to amino acid sequence 883-984 of the C terminus region and having a molecular weight of 116 kD
Preservatives	Provided as solution in phosphate buffered saline with 0.08% sodium azide
Form/Appearance	Provided as solution in phosphate buffered saline with 0.08% sodium azide
Concentration	See vial for concentration
Storage	Product should be stored at -20°C. Aliquot to avoid freeze/thaw cycles
Note	For research use only
Application notes	Applications: 1-10 ug/ml for Western Blotting and 10-20 ug/ml for Immunoprecipitation.
Isotype	IgG
Uniprot ID	P54762
Hazard Information	This product is intended FOR RESEARCH USE ONLY, and FOR TESTS IN VITRO, not for use in diagnostic or therapeutic procedures involving humans or animals.
Expiration Date	12 months from date of receipt.



Immunoprecipitation analysis of CHO cell...