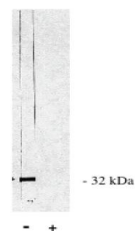


Product Datasheet

Protein Phosphatase V/C antibody (orb108638)

Description	Rabbit polyclonal to Protein Phosphatase V/C
Species/Host	Rabbit
Reactivity	Bovine, Human, Mouse, Rat
Conjugation	Unconjugated
Tested Applications	IHC-P, WB
Preservatives	Provided as solution in phosphate buffered saline with 0.08% sodium azide
Form/Appearance	Provided as solution in phosphate buffered saline with 0.08% sodium azide
Concentration	See vial for concentration
Storage	Product should be stored at -20°C. Aliquot to avoid freeze/thaw cycles
Note	For research use only
Application notes	Applications: Immunoblotting 1-10 ug/ml and 10-20ug/ml for Immunoprecipitation.
Isotype	IgG
Source	The immunogen used to generate the purified antibody was a peptide conjugated to KLH corresponding to the sequence NH ₂ -Cys-Ala-Val-Pro-Asp-Ser-Glu-Arg-Val-IlePro-Pro-Arg-Thr-Thr-Thr-Pro-Tyr-COOH. This peptide antibody corresponds to C - terminal peptide of PPV catalytic subunit having a MW of 33kDa.
Uniprot ID	Q9CQR6, O00743
Hazard Information	This product is intended FOR RESEARCH USE ONLY, and FOR TESTS IN VITRO, not for use in diagnostic or therapeutic procedures involving humans or animals.
Expiration Date	12 months from date of receipt.



Western blot analysis of rat brain homogenate.