

## Product Datasheet

### Protein Phosphatase 2 A/A antibody (orb108623)

**Description** Provided as solution in phosphate buffered saline with 0.08% sodium azide

**Species/Host** Rabbit

**Reactivity** Bovine, Human, Mouse, Rat

**Conjugation** Unconjugated

**Tested Applications** IHC-P, WB

**Concentration** See vial for concentration

**Storage** Product should be stored at -20°C. Aliquot to avoid freeze/thaw cycles

**Note** For research use only

**Application notes** Immunoblotting 5-10 ug/ml. Immunoprecipitation often used in combination with affinity purified anti-pp2A/C (Cat# P185P) to immunoprecipitate pp2A. Immunocytochemistry 10-15 ug/ml.

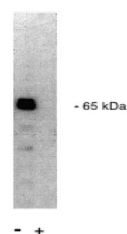
**Isotype** IgG

**Source** The immunogen used to generate the purified antibody was a peptide conjugated to KLH corresponding to the sequence NH<sub>2</sub>-Asp-Asp-Ser-Leu-Try-Pro-Ile-Ala-Val-Leu-Ile-Asp-Glu-COOH. This peptide antibody corresponds to N-terminal peptide of PP2A/A regulatory subunit having a MW of 65kDa. The sequence used is amino acid 7 - 19.

**Uniprot ID** [Q32PI5](#), [Q5XI34](#), [P30153](#), [Q76MZ3](#)

**Hazard Information** This product is intended FOR RESEARCH USE ONLY, and FOR TESTS IN VITRO, not for use in diagnostic or therapeutic procedures involving humans or animals.

**Expiration Date** 12 months from date of receipt.



Western blot analysis of rat brain homog...