

Product Datasheet

VCP Antibody (orb107641)

Description

VCP Antibody

Species/Host

Rabbit

Reactivity

Human, Monkey, Mouse, Rat

Conjugation

Unconjugated

Tested

FC, ICC, IF, IHC, IHC-Fr, WB

Applications
Immunogen

A synthetic peptide corresponding to a sequence at the C-terminus of human VCP (749-766aa DNDIRKYEMFAQTLQQR), identical to the related rat and mouse sequences.

Form/Appearance

Lyophilized

Concentration

Adding 0.2 ml of distilled water will yield a concentration of 500 µg/ml.

Storage

Store at -20°C for one year from date of receipt. After reconstitution, at 4°C for one month. It can also be aliquotted and stored frozen at -20°C for six months. Avoid repeated freeze-thaw cycles.

Note

For research use only

Application notes

Tested Species: In-house tested species with positive results. Predicted Species: Species predicted to be fit for the product based on sequence similarities. By Heat: Boiling the paraffin sections in 10mM citrate buffer, pH6.0, for 20mins is required for the staining of formalin/paraffin sections. Other applications have not been tested. Optimal dilutions should be determined by end users. . Add 0.2ml of distilled water will yield a concentration of 500ug/ml.

Isotype

Rabbit IgG

Clonality

Polyclonal

MW

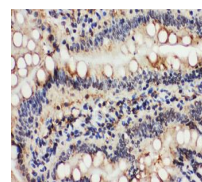
89322 MW

Uniprot ID
P55072
Dilution Range

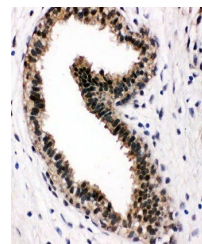
Western blot, 0.1-0.5µg/ml, Human, Rat, Mouse
Immunohistochemistry (Paraffin-embedded Section), 0.5-1µg/ml, Human, Mouse, Rat, By Heat
Immunohistochemistry (Frozen Section), 0.5-1µg/ml, Rat, Human, Mouse
Immunocytochemistry , 0.5-1µg/ml, Human, Mouse, Rat
Immunocytochemistry/Immunofluorescence, 5µg/ml, Human
Flow Cytometry, 1-3µg/1x10⁶ cells, Human

Expiration Date

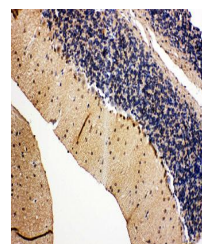
12 months from date of receipt.



Immunohistochemical analysis of formalin...



Immunohistochemical analysis of formalin...



Immunohistochemical analysis of formalin...