

Product Datasheet

Collagen I/COL1A1 Antibody (orb107158)

Description

Collagen I/COL1A1 Antibody

Species/Host

Rabbit

Reactivity

Human, Mouse, Rat

Conjugation

Unconjugated

Tested

ICC, IF, IHC, WB

Applications

Immunogen

A synthetic peptide corresponding to a sequence at the C-terminus of mouse Collagen I (1192-1207aa QPPQEKSDGGGRYYRA), identical to the related rat sequence, and different from the related human sequence by two amino acids.

Form/Appearance

Lyophilized

Concentration

Adding 0.2 ml of distilled water will yield a concentration of 500 µg/ml.

Storage

Store at -20°C for one year from date of receipt. After reconstitution, at 4°C for one month. It can also be aliquotted and stored frozen at -20°C for six months. Avoid repeated freeze-thaw cycles.

Note

For research use only

Application notes

WB: The detection limit for COL1A1 is approximately 0.5ng/lane under reducing conditions. Tested Species: In-house tested species with positive results. Predicted Species: Species predicted to be fit for the product based on sequence similarities. By Heat: Boiling the paraffin sections in 10mM citrate buffer, pH6.0, for 20mins is required for the staining of formalin/paraffin sections. Other applications have not been tested. Optimal dilutions should be determined by end users. . Add 0.2ml of distilled water will yield a concentration of 500ug/ml.

Isotype

Rabbit IgG

Clonality

Polyclonal

MW

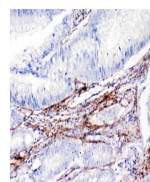
138032 MW

Uniprot ID

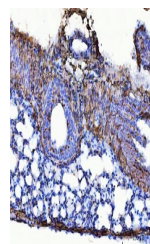
P11087

Dilution Range

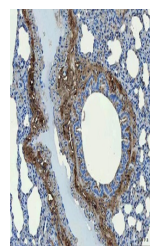
Western blot, 0.1-0.5µg/ml, Human, Rat, Mouse
Immunohistochemistry (Paraffin-embedded Section), 1-2µg/ml, Human, Mouse, Rat, By Heat
Immunohistochemistry (Frozen Section), 0.5-1µg/ml, Human, Rat, Mouse
Immunocytochemistry, 0.5-1µg/ml, Mouse, Human, Rat
Immunofluorescence, 2µg/ml, Human



IHC analysis of Collagen I/COL1A1 using Biorbyt antibody (1:1000) on paraffin-embedded sections.



IHC analysis of Collagen I/COL1A1 using Biorbyt antibody (1:1000) on paraffin-embedded sections.



IHC analysis of Collagen I/COL1A1 using Biorbyt antibody (1:1000) on paraffin-embedded sections.