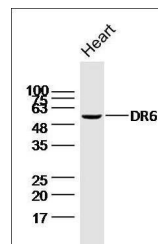


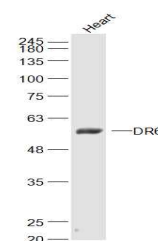
Product Datasheet

DR6 antibody (orb101582)

Description	DR6 antibody
Species/Host	Rabbit
Reactivity	Mouse, Rat
Conjugation	Unconjugated
Tested Applications	WB
Immunogen	KLH conjugated synthetic peptide derived from human DR6/CD358 (101-200/655 aa)
Target	DR6
Preservatives	0.01M TBS(pH7.4) with 1% rAlbumin, 0.03% Proclin300 and 50% Glycerol.
Form/Appearance	Liquid
Concentration	1mg/ml
Storage	Shipped at 4°C. Store at -20 °C for one year. Avoid repeated freeze/thaw cycles.
Note	For research use only
Isotype	IgG
Clonality	Polyclonal
MW	52/68 kDa
Uniprot ID	075509
Dilution Range	WB=1:500-2000
Expiration Date	12 months from date of receipt.



Western blot analysis of Mouse Heart Lys...



Western blot analysis of Mouse Heart Lys...